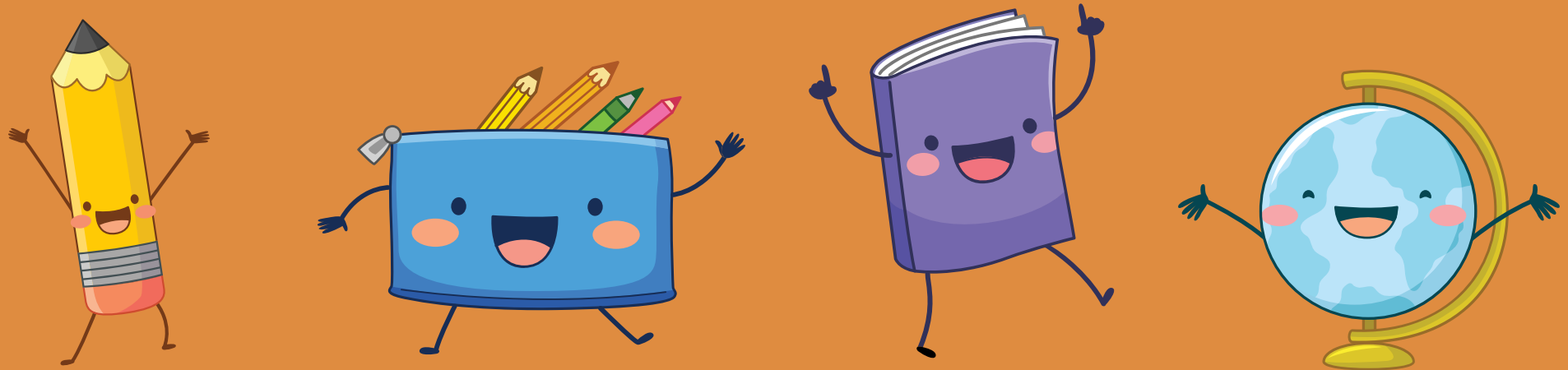


# Central Middle School 2023 - 2024 Classroom Support / Discipline Policy



Ms. Williams and Dr. Mansion



# Welcome CMS Students!

- **Dean's Office Objective:**
  - Support teachers to be able to provide quality instruction to the students of Central Middle School.
  - Support students by providing a safe environment to promote learning for all students at Central Middle School
  - Manage and develop student behaviors and attitudes to maximize student achievement.
  - Foster Positive relationships so that students feel known, valued and inspired.



# Components of the Plan

- Definitions of Student Behaviors
- Definitions of Corrective Strategies
  - Corrective Strategies Aligned with Social Emotional Supports
- Elementary Plan PreK-6<sup>th</sup>
- Secondary Plan 7<sup>th</sup>-12<sup>th</sup>





**The Discipline Plan location:**

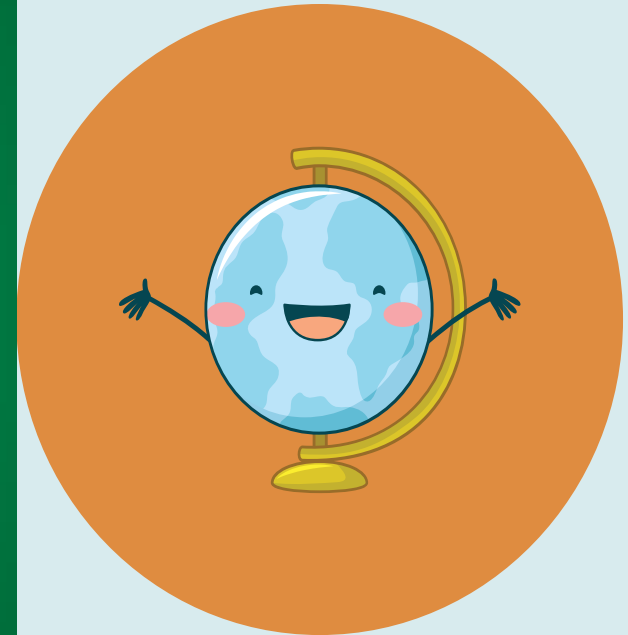
# **Code of Student Conduct**

- District website
- Departments
- Student Services



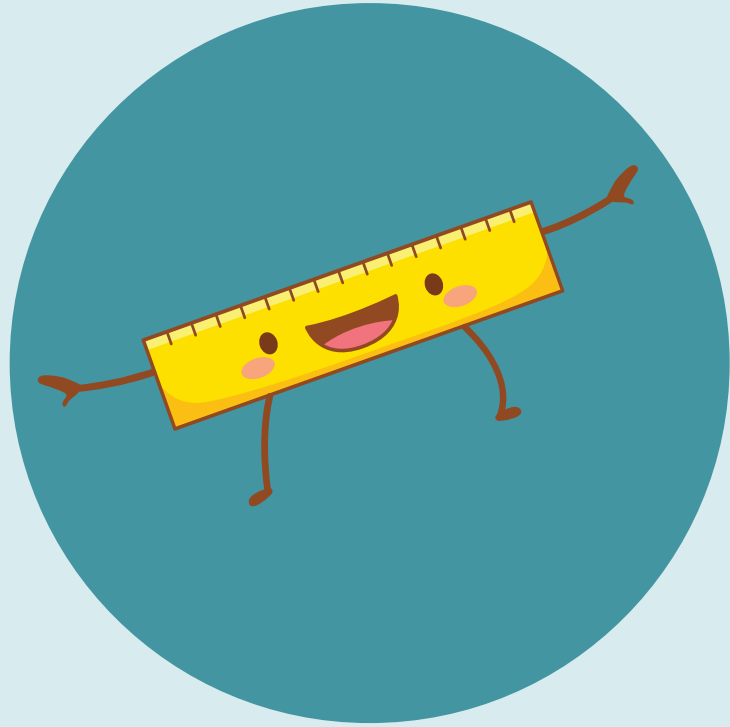
# What the discipline plan is about!

- A framework for building districtwide consistency for behaviors that lead to suspensions and recommendations for expulsions
  - Certain behaviors (Level 4 and 5) are non-negotiable and will continue to be handled with suspensions or possible recommendations for expulsions
- Being thoughtful about what we are doing when we discipline students
- Whenever possible aligning discipline with social emotional supports





# Discipline Issues



## **Dress Code:**

Central Middle School dress code policy mirrors district standards and policy.

If the student's outfit is out of compliance, students will be re-directed, and parents will receive an email / call. Other disciplinary actions will follow based on the number of documented redirections.

## **Cell Phones:**

Central Middle School Handbook states:

"... per school board policy students cell phones or electronic devices must be turned off and stored out of sight from 9:00 a.m. until after the student exits the green gate at 4:15"..... Use of cell phone or electronic devices during instructional time will result in disciplinary action.

## **Out Of Area:**

Students skipping class or being where they are not supposed to including excessive time spent from the classroom.

# BPS / CMS Dress Code

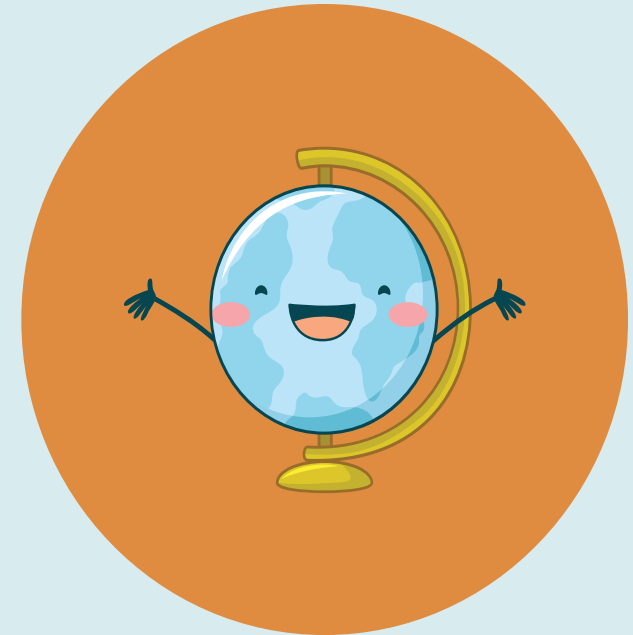
## **Where does the dress code rules come from?**

Central Middle School follows the Brevard Public Schools dress code.

## **What are some of the styles that do not adhere to dress code?**

### **Head**

- “Head gear, including but not limited to caps, hats, bandanas, and/or sunglasses shall not be worn indoors on campus unless permitted by the principal for religious or medical reasons. Students may wear sunglasses, hats, or other sun-protective wear while outdoors during school hours, however these articles must not violate this dress code. “



# BPS / CMS Dress Code

**Where does the dress code rules come from?**

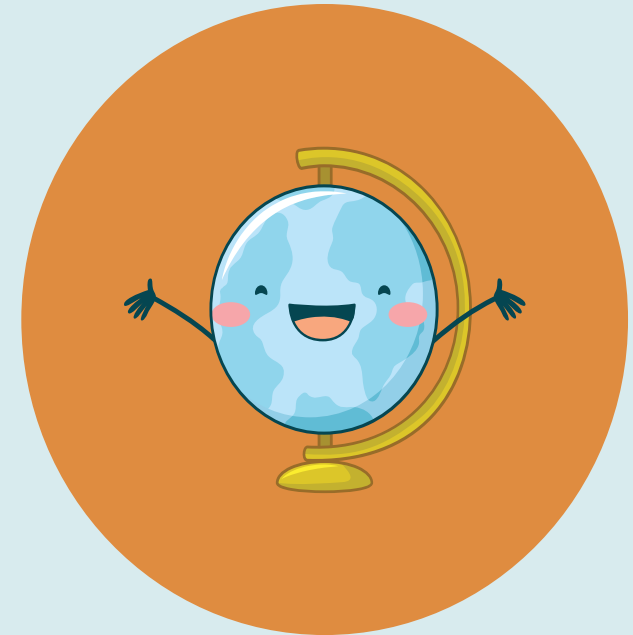
Central Middle School follows the Brevard Public Schools dress code

**What are some of the styles that do not adhere to dress code?**

## Clothing

1. All clothing must be appropriately sized, securely fastened and cover midriff, back, sides, and all undergarments at all times. (For example, suspenders should be over the shoulders, pants secured at the waist, belts buckled, no underwear as outerwear, no underwear exposed.) Clothing should be opaque (not able to be seen through)

2. Garments must be of a length and fit that are acceptable to the build and stature of the student. The cut of sleeveless garments must not expose undergarments. Clothing must cover the body from one armpit across to other armpit. Upper garments should meet lower garments.





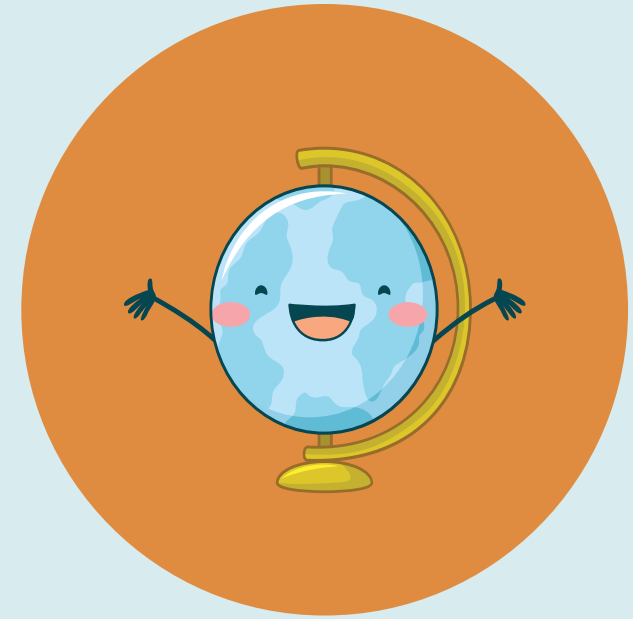
# BPS / CMS Dress Code

## Clothing

3. “Strapless garments are prohibited. (Tube tops and halter tops are prohibited.) Formalwear for special events may include strapless garments.”

4. “Pants and shorts shall be worn at the waist, and shall not extend below the heel of the shoe in length. **Rips, holes, or tears in clothing must be below mid-thigh.**”

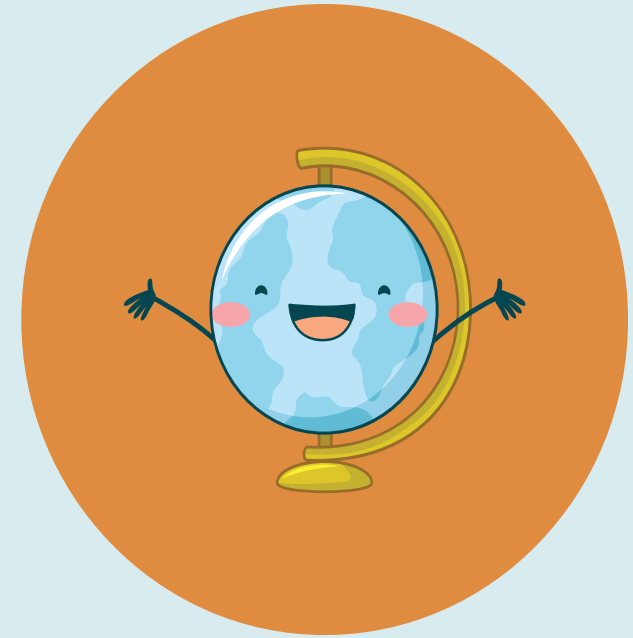
5. Shorts must have clearly discernable inseams that covers the buttocks.



# BPS / CMS Dress Code

## Footwear

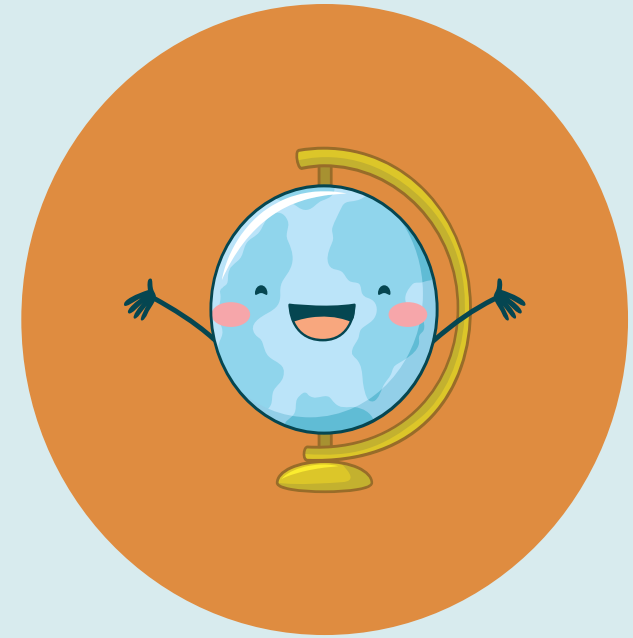
1. Students must wear shoes that are safe and appropriate for the learning environment, including recess, PE, CTE, and labs. (Crocs are not appropriate for grades K-6).
2. Students in grades 7- 12 may wear footwear commonly considered as beachwear (for example: flip flops, thongs, Crocs, etc.) unless a course of instruction requires them to wear safe and appropriate footwear to protect the student from injury (i.e. athletic shoes in physical education class).
3. Inappropriate footwear includes, but not limited to, roller skates, skate shoes, and slippers.



# BPS / CMS Dress Code

## **Accessories**

1. Gang paraphernalia, garments and/or jewelry, tattoos, or other insignias, which display or suggest sexual, vulgar, drug, alcohol, or tobacco-related wording/graphics or may tend to provoke violence or disruption in school shall not be worn.
2. Clothing must not state, imply, or depict hate speech or imagery targeting groups based on race, ethnicity, gender, sexual orientation, religious affiliation, or any other characteristics protected by Federal or State law.
3. Any articles of clothing or jewelry that may cause injury including, but not limited to, items with spikes, or sharp objects, wallet chains, and heavy link chains are not allowed.
4. Dress shall not emulate non-human characteristics.

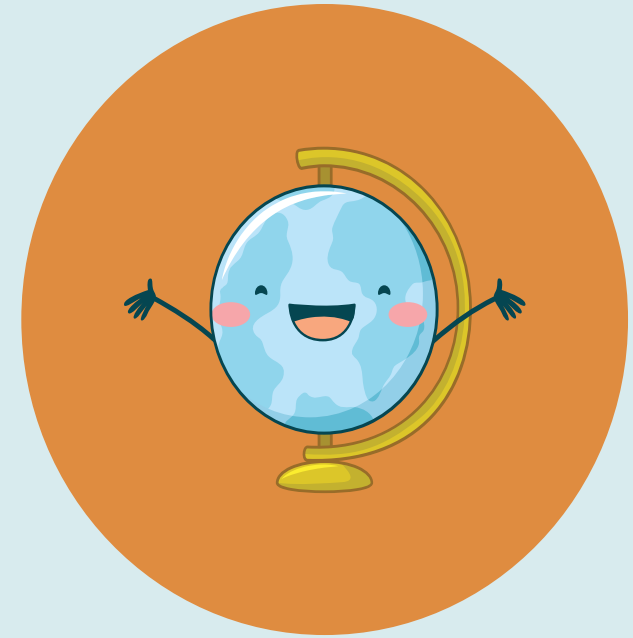


# BPS / CMS Dress Code

Beachwear and see-through or otherwise revealing apparel is not considered to be appropriate.

Students shall not be permitted to wear clothing that contains printed profanity as defined in Policy 5500.

Student Conduct, or any clothing, accessories, or regalia that conveys membership or affiliation with a "gang" or other similarly oriented group or association prone to violence or criminal acts. Gang clothing, accessories, or regalia can include, but is not limited to, gang-related colors, rolled up bandanas about the head or other parts of the body, knit caps, rolled up or split pant cuffs, certain sports attire that has a "street meaning", etc.



# BPS / CMS Dress Code (Cont.)

## **What happens if a student is out of dress code?**

- Documented warning and wardrobe change. (2x only)
- Deans' Detention (3<sup>rd</sup> documented redirection & wardrobe change)
- In School Suspension (4 or more documented redirection & wardrobe change)

## **Does the school have clothing to change into?**

Some clothing options available and students can change into gym uniform

## **What about field trips?**

Students must follow all dress code guidelines. Some trips such as Gradventure, have additional dress code requirements.

# Tardy Policy!

**Tardies to school and/or Class may result in referral.**

- 3 or more tardies to school is a detention
- Tardy to class is a detention
- 2 or more documented tardies in a week is a day of ISS
- To participate in extracurriculars you must be present at school that day
- Our attendance clerk is Ms. Cazeau
- Our dean's clerk is Ms. Dufrane





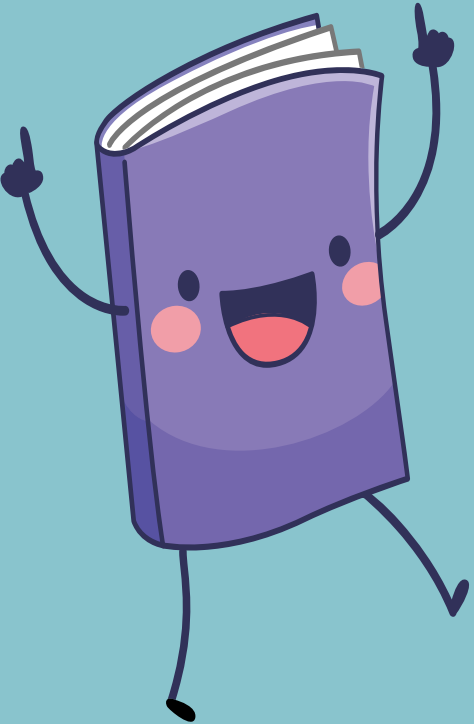
# Lunch Expectations

---



- As you enter the cafeteria you need to choose a line or sit down **with your 3rd period class.**
- Tables are labeled with numbers and your 3<sup>rd</sup> period teacher will tell you the table assigned to them. You will receive a consequence for being out of area when caught sitting at another teacher's table.
- You must speak with any of the adults inside the cafeteria if you need to use the restroom or leave the cafeteria for any reason
- Restrooms are in the back northeast corner of the cafeteria.

# Minga Hall Passes



- ✓ Your classroom teacher must create an electronic hall pass for you if you need to leave the room.
- ✓ Your destinations may include the restroom, nurse, deans' office, front office, guidance, media center, etc.
- ✓ **DON'T FORGET YOU HAVE A TIME LIMIT AND A LIMIT OF PASSES YOU CAN USE!**  
(You can always use the restroom before / after school, lunch, and in between classes)
- ✓ FYI - You will receive a consequence if you walk out of class without permission!
- ✓ Please tell any adult on our campus your name if asked. You can be suspended for not complying!
- ✓ If asked your name, it may simply be to check you have a valid hall pass because since they're electronic we can check in the halls.

# Central Middle School Eagle Expectations

Eagle Expectations	
<i>Make Central a place you can be proud of: C.A.R.E.</i>	
_____ 's Classroom	
Come Prepared	<ul style="list-style-type: none"><li>• Arrive on time</li><li>• Be ready to learn</li><li>• Personal electronics off and in backpack</li><li>• Have an organized AVID binder</li><li>•</li><li>•</li></ul>
Assume Responsibility	<ul style="list-style-type: none"><li>• Do your best</li><li>• Clean your space</li><li>• Follow directions the first time</li><li>• Be actively engaged in learning</li><li>• Use your AVID binder</li><li>•</li><li>•</li></ul>
Respect Others	<ul style="list-style-type: none"><li>• Polite language</li><li>• Respect property</li><li>• Be kind in all words and actions</li><li>• Get permission to leave the room</li><li>•</li><li>•</li></ul>
Excel	<ul style="list-style-type: none"><li>• Start with a positive attitude</li><li>• Take initiative</li><li>• Review, edit, process notes</li><li>•</li><li>•</li></ul>